

quick ship program

orders that meet the following criteria ship in 2 weeks or less:

- » **Standard square straight steel poles without any modifications** (i.e., special bolt circle, pole height other than listed here (cutback), drill mount and tenon top on same pole, mid-pole brackets, duplex/GFI receptacle, extended warranties, etc.)
- » **Standard T2 tenon or drilled up to four fixtures** (see page 7 for top-mount and bracket options)
- » **Dark Bronze, Textured Black, Textured Medium Bronze, Textured Grey, and Textured White powder-coat finish only**
- » **19 poles or less**

All poles that meet the criteria above are shipped out with a direct-drill or tenon-mount top (see page 7).

the following disqualifies an order from our quick-ship program; standard lead times and pricing will apply for such orders:

- » Any pole modifications.
- » Color requests outside of those noted in the section above.
- » Orders of 20 poles or more.

quick-ship pricing

Catalog Number	Mounting Height (Ft)	Effective Projected Area Rating W/ 1.3 Gust (Sq. Ft.)			
		80	90	100	120
101-4011-15	15	15.1	12.3	9.8	7.0
101-4011-20	20	9.0	7.3	5.9	4.2
101-4011-25	25	4.1	3.3	2.6	1.8
101-5011-25	25	8.5	6.9	5.6	4.0
101-5011-30	30	4.2	3.4	2.7	1.9
101-5007-30	30	10.6	8.6	6.9	4.9

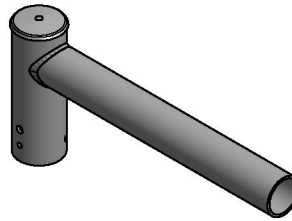


quick-ship drill, tenon, and bracket options

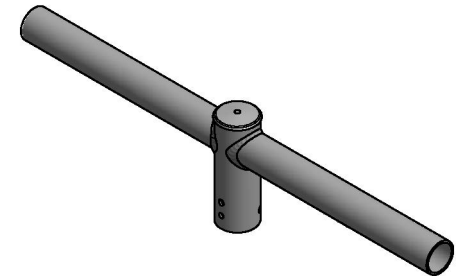
Below are the bracket options that may accompany the Square Straight Steel orders of a quantity of 19 or less poles and ship in 2 weeks or less. Selection of other brackets or colors outside of the color key excludes an order from the Quick-Ship Program.

color key for quick ship

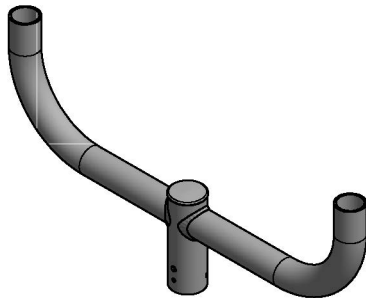
Design	Color
TWH	Textured White
DB	Dark Bronze
TMB	Textured Medium Bronze
TGR	Textured Gray
TBK	Textured Black



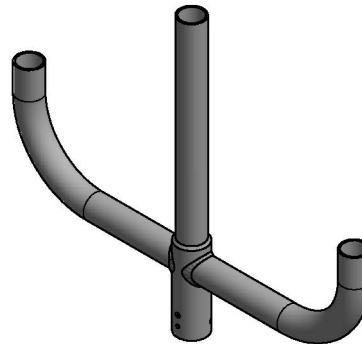
SB-19



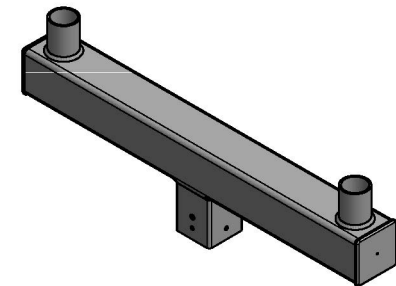
SB-218



PTB-2



PTB-3



SMB-2