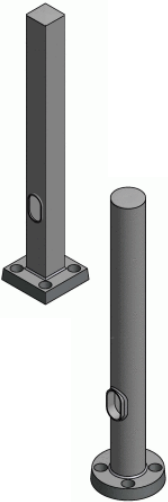


## Quick-Ship Pole Options



### Steel

| Catalog Number | Mounting Height (Ft) | Square Size (in.) | Effective Projected Area Rating W/ 1.3 Gust (Sq. Ft.) |      |     |     |
|----------------|----------------------|-------------------|---|------|-----|-----|
|                |                      |                   | 80  | 90   | 100 | 120 |
| 101-4011-15    | 15                   | 4                 | 15.1  | 12.3 | 9.8 | 7.0 |
| 101-4011-20    | 20                   | 4                 | 9.0   | 7.3  | 5.9 | 4.2 |
| 101-4011-25    | 25                   | 4                 | 4.1   | 3.3  | 2.6 | 1.8 |
| 101-5011-25    | 25                   | 5                 | 8.5   | 6.9  | 5.6 | 4.0 |
| 101-5011-30    | 30                   | 5                 | 4.2   | 3.4  | 2.7 | 1.9 |
| 101-5007-30    | 30                   | 5                 | 10.6  | 8.6  | 6.9 | 4.9 |



### Aluminum

#### Square Straight Aluminum

| Catalog Number | Mounting Height (Ft) | Square Size (in.) | Effective Projected Area Rating W/ 1.3 Gust (Sq. Ft.) |     |     |     |
|----------------|----------------------|-------------------|---|-----|-----|-----|
|                |                      |                   | 80  | 90  | 100 | 120 |
| 105-4018-16    | 16                   | 4                 | 8.9   | 6.8 | 5   | 2.1 |
| 105-4018-20    | 20                   | 4                 | 6.3   | 4.6 | 3.2 | 1   |
| 105-5018-20    | 20                   | 5                 | 10.8  | 8.1 | 5.8 | 1.5 |
| 105-5018-25-VD | 25                   | 5                 | 7.3   | 5.1 | 3.3 | 1   |

#### Round Straight Aluminum

| Catalog Number | Mounting Height (Ft) | Diameter O.D. (in.) | Effective Projected Area Rating W/ 1.3 Gust (Sq. Ft.) |     |     |     |
|----------------|----------------------|---------------------|---|-----|-----|-----|
|                |                      |                     | 80  | 90  | 100 | 120 |
| 205-5018-12    | 12                   | 5                   | 10.9  | 8.4 | 6.3 | 4.3 |
| 205-5018-16    | 16                   | 5                   | 11.6  | 8.8 | 6.5 | 4.2 |
| 205-5018-20    | 20                   | 5                   | 8.2   | 6   | 4.1 | 2.5 |

Orders that meet the following criteria ship in **2 weeks or less:**

- » Steel and aluminum pole options listed in the table to the left without any modifications (i.e., special bolt circle, pole height other than listed here (cutback), drill mount and tenon top on same pole, mid-pole brackets, duplex/GFI receptacle, extended warranties, etc.)
- » Standard T2 tenon or drilled up to four fixtures (see next page for top-mount and bracket options)
- » Dark Bronze, Textured Black, Textured Medium Bronze, Textured Grey, and Textured White powder-coat finish only
- » Steel 19 poles or less
- » Aluminum 10 poles or less

All poles that meet the criteria above are shipped out with a direct-drill or tenon-mount top (see next page).

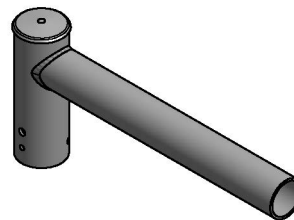


### quick-ship drill, tenon, and bracket options

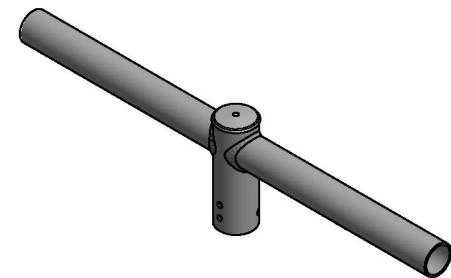
Below are the bracket options that may accompany the quick-ship pole orders with a quantity of 19 or less for steel and quantity of 10 or less for aluminum poles and ship in 2 weeks or less. Selection of other brackets or colors outside of the color key excludes an order from the Quick-Ship Program.

#### color options for quick-ship products

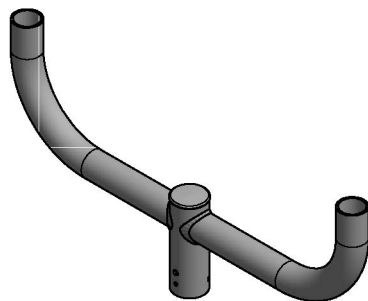
| Design | Color                  |
|--------|------------------------|
| TWH    | Textured White         |
| DB     | Dark Bronze            |
| TMB    | Textured Medium Bronze |
| TGR    | Textured Gray          |
| TBK    | Textured Black         |



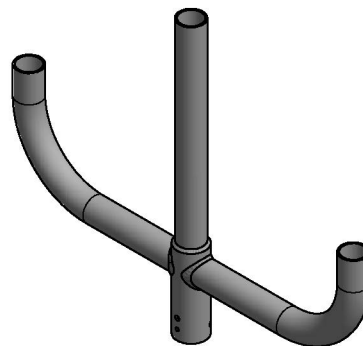
SB-19



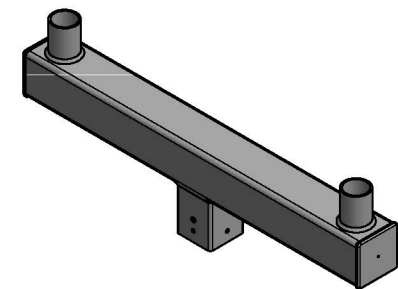
SB-218



PTB-2



PTB-3



SMB-2