

The following is a break down of hardware included with each pole purchase.

**Pole Cap**

Poles caps are used to cover top of pole on drilled mounts.



pole cap

**Grounding Bolt and Button Plug**

The poles must be hung in order to travel through the powder coat booth. We do this by drilling(3) holes in the pole. The holes at the top are plugged while the hole at the bottom of the pole is utilized as the Grounding Lug.



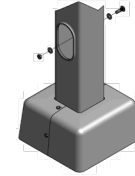
1/2" UNC grounding nut



grounding washers



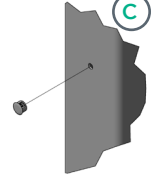
grounding screw



B



button plug



C

**Hand Hole Cover**

Hand hole cover with gasket and back bar. Hand hole covers are supplied with a water-proofing gasket. Peel the backing and secure to the inside of the hand hole cover.



hand hole cover screw



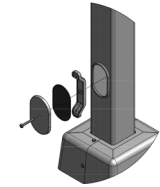
hand hole cover



hand hole gasket



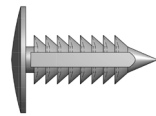
hand hole locking bar



D

**Steel Anchor Based Poles**

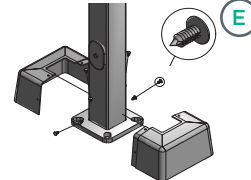
Two-piece base cover with 4 push pins. The standard base cover is a two-piece ABS plastic that is secured with 4 push pins



ABS push pin



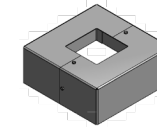
ABS cover



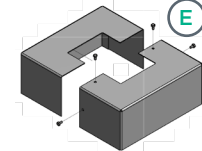
E



sheet metal screws



custom steel base cover



E

**Aluminum Poles**

SAE washers and base plugs for anchor bolt poles.



nut covers



aluminum base casting

**7" and 8" Round Tapered Aluminum Poles**

Shoe base and nut covers.



nut covers



aluminum shoe base



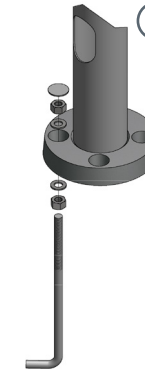
anchor bolt hex nut



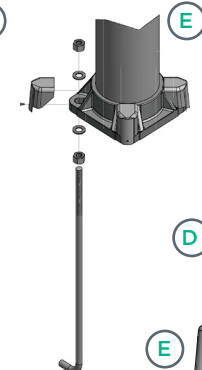
anchor bolt washer



anchor bolt



E



E

D

B