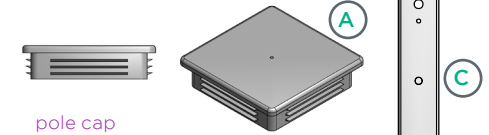


The following is a break down of hardware included with each pole purchase.

Pole Cap

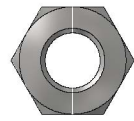
Poles caps are used to cover top of pole on drilled mounts.



pole cap

Grounding Bolt and Button Plug

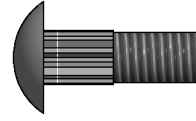
The poles must be hung in order to travel through the powder coat booth. We do this by drilling(2) holes in the pole. The hole at the top is plugged while the hole at the bottom of the pole is utilized as the grounding lug.



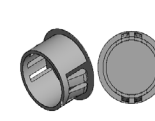
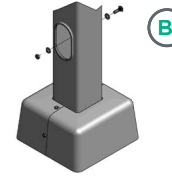
5/16 -18 UNC grounding nut



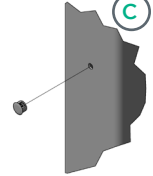
grounding washers



serrated shank grounding screw



button plug



Hand Hole Cover

Hand hole cover with gasket and back bar. Hand hole covers are supplied with a water-proofing gasket. Peel the backing and secure to the inside of the hand hole cover.



hand hole cover screw



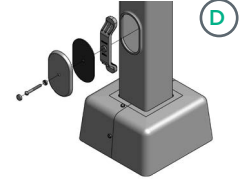
hand hole cover



hand hole gasket

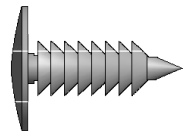


hand hole locking bar

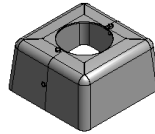


Steel Anchor Based Poles

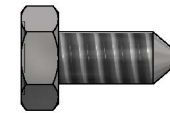
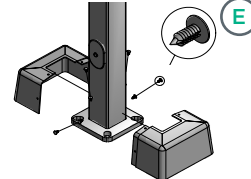
Two-piece base cover with 4 push pins. The standard base cover is a two-piece ABS plastic that is secured with 4 push pins



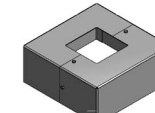
ABS push pin



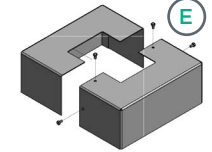
ABS cover



sheet metal screws

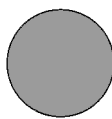


custom steel base cover

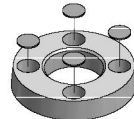


Aluminum Poles

SAE washers and base plugs for anchor bolt poles.



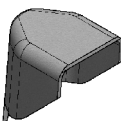
nut covers



aluminum base casting

7" and 8" Round Tapered Aluminum Poles

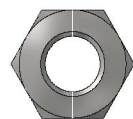
Shoe base and nut covers.



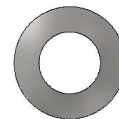
nut covers



aluminum shoe base



anchor bolt hex nut



anchor bolt washer



anchor bolt

